



TooLas

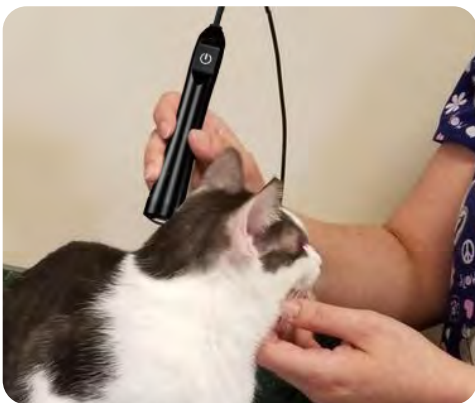
Veterinary Laser Therapy Device

Enhances Immunity

Repairs Cellular Inflammation

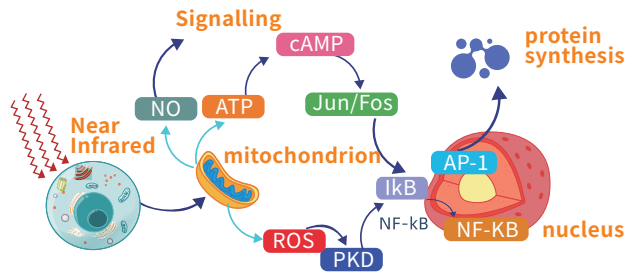
Quickly Relieves Pain

Promotes Tissue Regeneration



Photobiomodulation (PBM)

High-energy laser focuses on and stimulate cells: promoting tissue regeneration



It is that the laser near or in contact with the epidermis, allowing laser energy to penetrate to the mitochondria of damaged or diseased tissue for photobiomodulation effects.

High-Energy Laser Therapy Device (Veterinary)

- Proven Technology & Quality Assurance**
 - High safety, mature technology, and reliable performance.
- Treat Multiple Conditions with One Device**
 - Versatile Use for Better Recovery in Treatment, Rehab, and Surgery
- Smart Diagnostic System**
 - Pre-set Parameters for Quick Use, No Setup Needed
- Effortless Operation**
 - Learnable After Professional Training
- Expert After-Sales Support**
 - Personalized Training by Professional Veterinarians



PHOTOBIO-MODULATION THERAPY DOSAG

- Non-drug
- Non-surgical
- Non-invasive pain relief solution

Key to PBM Dosage for Effectiveness

Safe and effective PBM dosage must consider various treatment parameters, including wavelength, irradiance (commonly referred to as power density or brightness), pulse, and exposure time.

Factors Affecting Effective Treatment Depth

- Wavelength
- Irradiance (power and spot size)
- Energy delivery mode (contact vs. irradiation)
- Treatment time
- Treatment area size
- Tissue type (nerves, joints, muscles, etc.)

LASER CLASSIFICATION WHY CHOOSE CLASS IV LASERS?

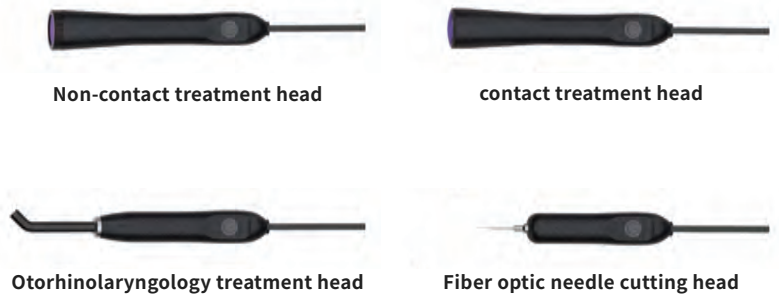
Toolas laser therapy device uses **Class IV lasers** reducing treatment time by nearly **30 times** compared to Class IIIb lasers for faster and more efficient treatment

WIDE RANGE OF APPLICATIONS

Suitable for various tissues, such as nerves, muscles, skin, tendons, ligaments, and joint capsules.



Including: dogs, cats, horse, rabbits, snakes, birds, turtles, lizards, etc.



EG: Treating an area of **300 cm²** on the thoracic spine with a dose of **10J/cm²** requires delivering **3000 joules** to the surface to ensure deep tissue receives an adequate treatment dose

Class IV Laser

>0.5W
Max output power

3000J, 0.5W = 3.3min
30 times faster at 3.3 minutes

Class IIIb Laser

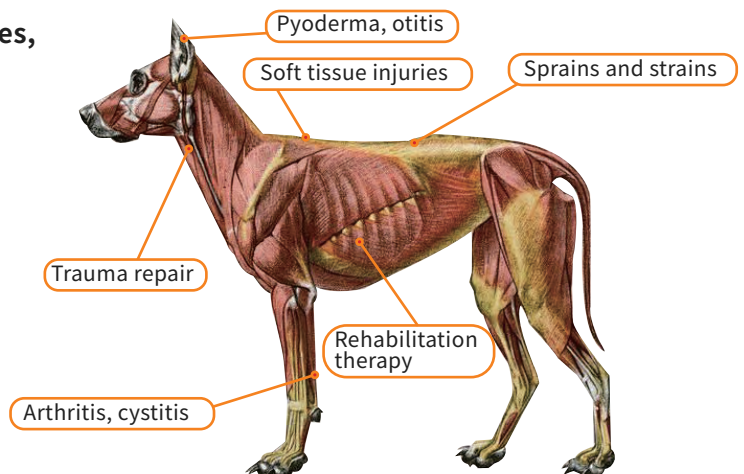
VS **0.5W**
Max output power

VS **3000J, 0.5W = 100min**

(Data source: FDA)

Power and Treatment Time Relationship

High-energy laser therapy devices not only have **higher power** but also **larger spot sizes**, making it easier to **deliver adequate treatment doses to larger treatment areas**.





SPECIFIC MECHANISMS OF PHOTOBIMODULATION EFFECTS

Inflammation Reduction

- Stabilizes cell membranes
- Promotes ATP production and synthesis
- Stimulates vasodilation
- Increases white blood cell activity
- Accelerates prostaglandin synthesis
- Reduces interleukin-1 levels
- Enhances lymphocyte response
- Increases angiogenesis
- Boosts superoxide dismutase (SOD) levels
- Lowers C-reactive protein and neopterin levels

Pain Relief

- Increases β -endorphins
- Enhances nitric oxide production
- Reduces bradykinin levels
- Normalizes ion channels
- Blocks depolarization of C-fiber afferent nerves
- Increases neuronal action potentials
- Enhances acetylcholine release
- Axon sprouting and neuronal regeneration

Accelerated Healing

- Enhances leukocyte infiltration
- Increases macrophage activity
- Stimulates angiogenesis
- Promotes fibroblast proliferation
- Keratinocyte proliferation
- Early epithelial formation
- Growth factor increase
- Strengthens cell proliferation and differentiation
- Enhances post-healing wound tensile strength

Immunity Enhancement

- Increases cellular energy
- Reduces oxidative stress
- Minimizes inflammatory response
- Promotes immune cell activation and migration
- Maintains immune tolerance



DEVICE SPECIFICATIONS

Model Name	Veterinary Laser Therapy Device
Model Number	TooLas
Device Classification	
Laser Classification	Class 4 laser device according to IEC 60825-1.
Electrical Safety	Class I, Type B device in accordance with EN/IEC 60601-1.
User Interface	
Touchscreen	10.1-inch, 1280 × 800pixel
Sound Pressure Level	50-75 dB
Mechanical Specifications	
Size	25 cm (L) × 28 cm (W) × 28 cm (H)
Weight	4.1 kg (Main unit)
Electrical Specifications	
Input Voltage	100-240VAC, 50/60Hz, 150W, 12DC
Output Voltage	≤10A

Environmental Conditions	
Operating Temperature	15°C to 40°C
Storage Temperature	0°C to 70°C
Cooling Method	Forced air cooling
Optical Specifications	
Maximum Output Power	15W
Wavelengths	808nm±20nm, 980nm±20nm
Guide Light	650nm±20nm
Operating Modes	Continuous and pulsed
Pulse Duration (50% duty cycle)	1, 2.5, 5, 25, 50, 250ms
Pulse Frequency	2, 10, 20, 100, 200, 500Hz



COMMON CLINICAL CASES IN VETERINARY MEDICINE

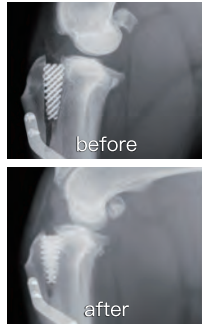
Arthritis

Symptoms:

Discharge from surgical wound

Effect:

Two months after the TTA (Tibial Tuberosity Advancement) surgery, laser treatment is carried out, it can both reduce inflammation and promote bone healing as well as the growth of cartilaginous tissues



Trauma

Symptoms:

Trauma caused by the impact on the eyelid

Effect:

After one week of use, the wound scabbed over more quickly, and the surrounding skin gradually recovered. The healing effect was remarkable.



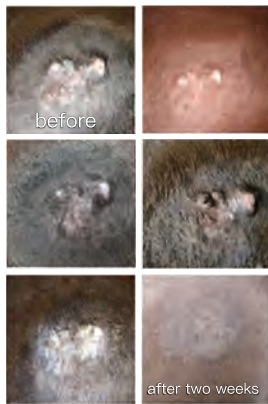
Skin Diseases/Allergies

Symptoms:

There is verrucous dermatitis on the lateral part of the left chest

Effect:

After two consecutive weeks of use, the wart-like growths gradually decreased and fell off, and the skin surface returned to being smooth



Muscle Tissue Diseases

Symptoms:

The leg is swollen due to a ligament strain

Effect:

The swelling has been significantly reduced within 7 days, and the ligament strain has recovered well.



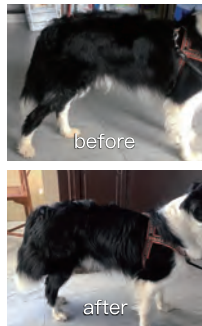
Pain Management

Symptoms:

Pain and lameness, abnormal gait, and resistance to touch

Effect:

The pain weakened and the lameness improved within a week; it returned to normal after four weeks



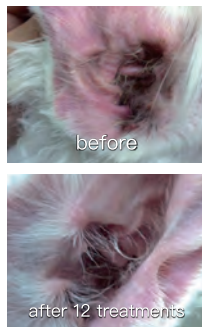
Ear, Nose And Oral Diseases

Symptoms:

The chronic otitis media relapsed after stopping the medication, and the tympanic membranes on both sides were damaged

Effect:

The secretion decreased after 7 treatments; The redness and swelling disappeared after 12 treatments.



SIX ADVANTAGES OF THE HIGH-ENERGY LASER THERAPY DEVICE

